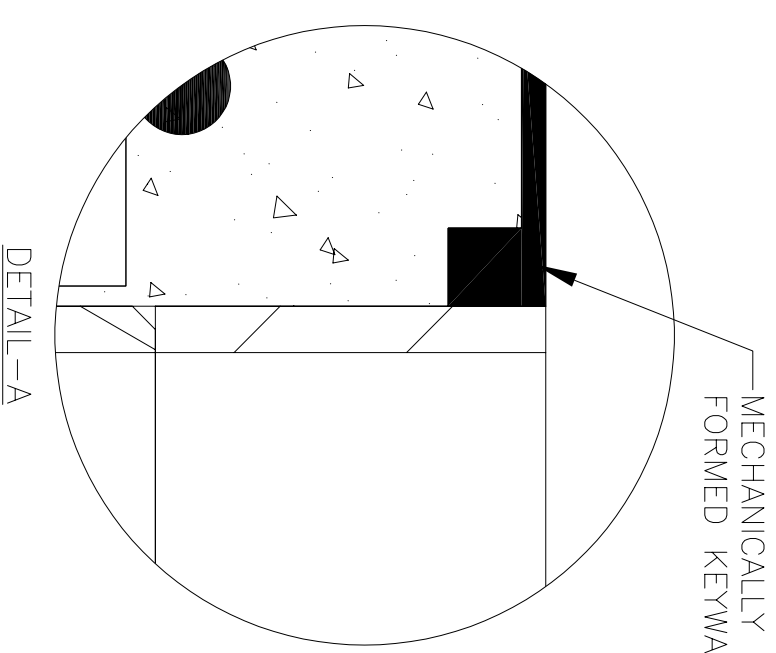
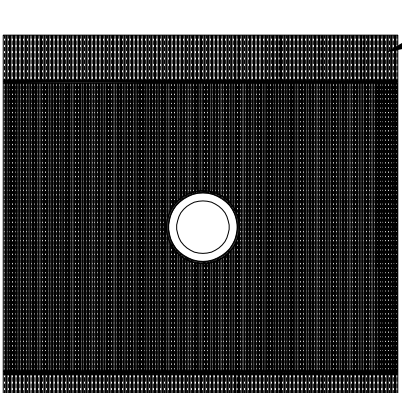
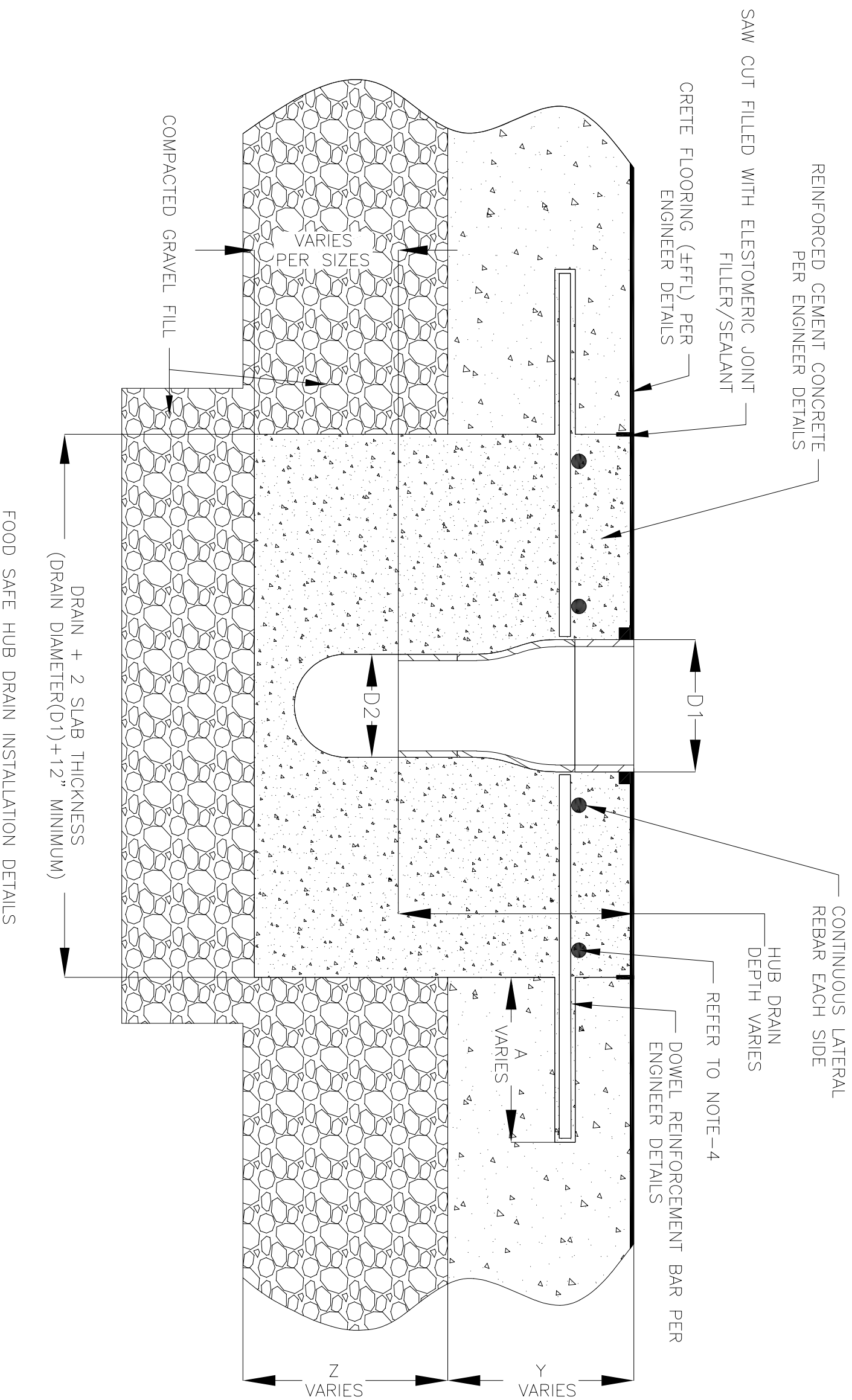


NOTES: UNLESS OTHERWISE SPECIFIED

1. ALL DIMENSIONS ARE IN INCHES.
2. CLEANOUT MATERIAL: STAINLESS STEEL T304
3. THIS INSTALLATION IS IDENTICAL FOR ALL CLEANOUTS.
4. SPECIFYING ENGINEER IS RESPONSIBLE FOR CONCRETE ENCASUREMENT AND REINFORCING BASED UPON APPLICATION AND LOCAL CODES. RECOMMENDED REBAR THICKNESS IS $\frac{1}{2}$ " DIAMETER.
5. REFER TO <https://info.slotdrainsystems.com/installresources> FOR INSTALLATION INSTRUCTIONS.



CRETE FLOORING (FFL) PER ENGINEER DETAILS

CONTINUOUS LATERAL REBAR EACH SIDE

HUB DRAIN DEPTH VARIES

REFER TO NOTE-4

DOWEL REINFORCEMENT BAR PER ENGINEER DETAILS

VARIES

VARIES

VARIES

VARIES PER SIZES

COMPACTED GRAVEL FILL

DRAIN + 2 SLAB THICKNESS (DRAIN DIAMETER(D1)+12" MINIMUM)

FOOD SAFE HUB DRAIN INSTALLATION DETAILS

REVISIONS

| REV | DESCRIPTION | DATE | BY |
|-----|----------------------|----------|----|
| 0 | INITIAL RELEASE - R0 | 5/9/2024 | DK |



DRAWING TITLE
CRETE FLOOR-RETROFIT INSTALLATION

DRAIN SERIES
FOOD SAFE HUB DRAIN

DWG NO. IN-FSHUB-100-R0

SIZE B SCALE NTS SHEET 1 OF 1

ALL DRAWINGS ARE THE EXCLUSIVE PROPERTY OF SLOT DRAIN SYSTEMS. ANY REPRODUCTION, IN PART OR IN WHOLE IS PROHIBITED WITHOUT PROPER CONSENT.