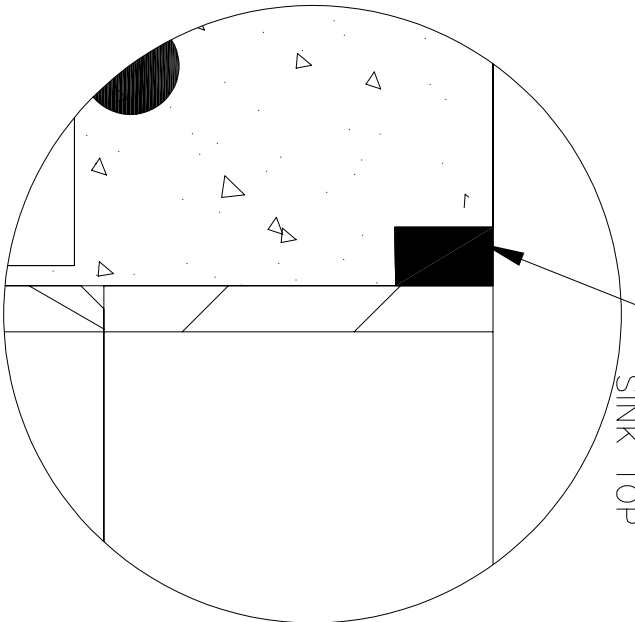
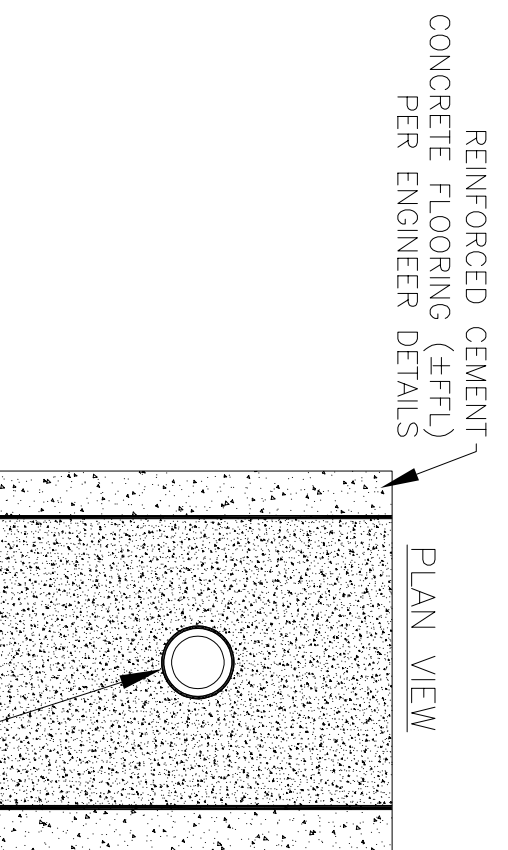
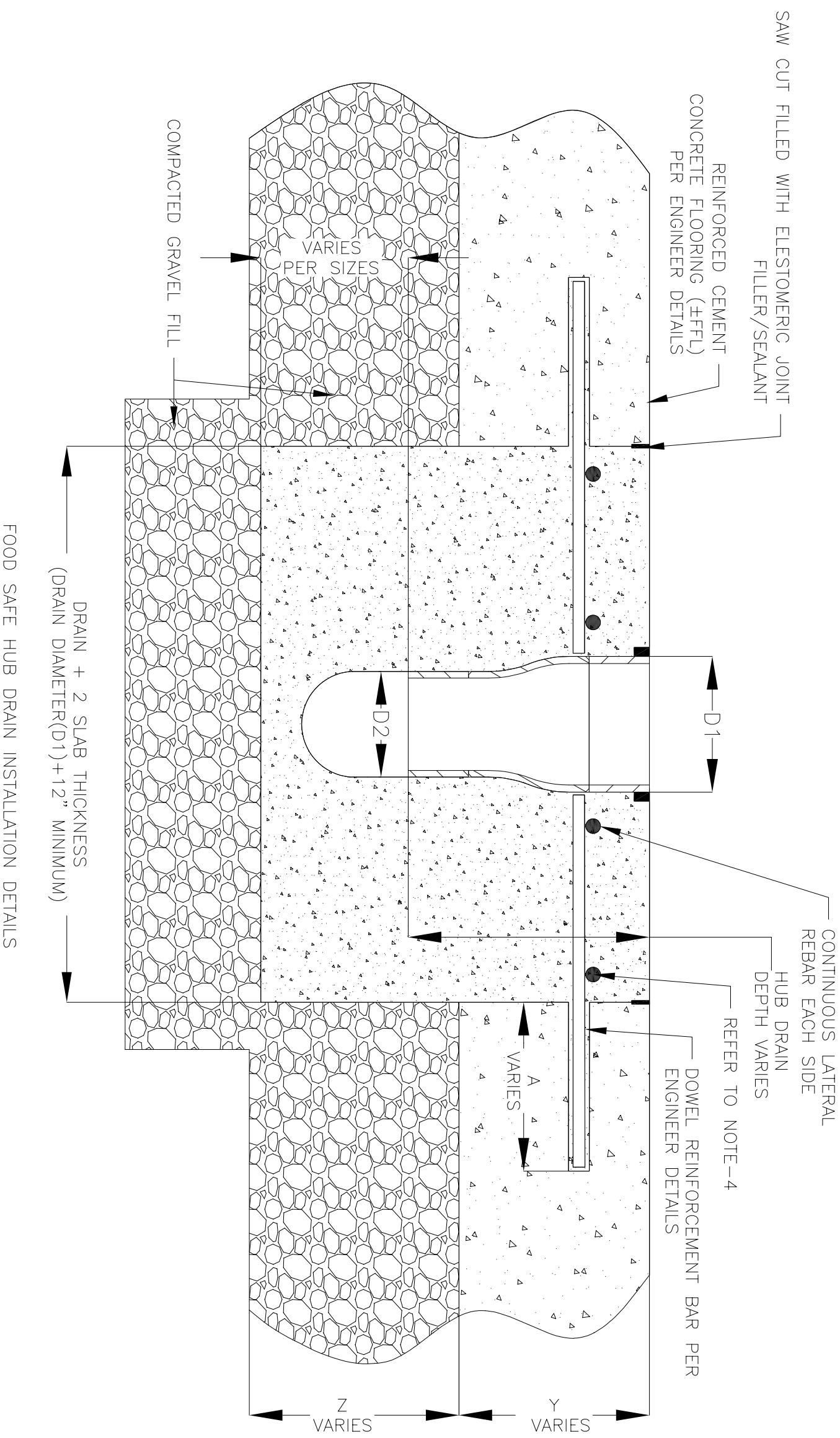


NOTES: UNLESS OTHERWISE SPECIFIED

1. ALL DIMENSIONS ARE IN INCHES.
2. CLEANOUT MATERIAL: STAINLESS STEEL T304
3. THIS INSTALLATION IS IDENTICAL FOR ALL CLEANOUTS.
4. SPECIFYING ENGINEER IS RESPONSIBLE FOR CONCRETE ENCASUREMENT AND REINFORCING BASED UPON APPLICATION AND LOCAL CODES. RECOMMENDED REBAR THICKNESS IS $\frac{1}{2}$ " DIAMETER.
5. REFER TO <https://info.slotdrainsystems.com/installresources> FOR INSTALLATION INSTRUCTIONS.



REVISIONS

REV	DESCRIPTION	DATE	BY
0	INITIAL RELEASE - RO	5/9/2024	DK



DRAWING TITLE		CONCRETE FLOOR-RETROFIT INSTALLATION	
DRAWING SERIES		FOOD SAFE HUB DRAIN	
DWG NO.	SIZE	SCALE	SHEET
IN-FSHUB-101-RO	B	NTS	1 OF 1
REV.			0

ALL DRAWINGS ARE THE EXCLUSIVE PROPERTY OF SLOT DRAIN SYSTEMS. ANY REPRODUCTION IN PART OR IN WHOLE IS PROHIBITED WITHOUT PROPER CONSENT.