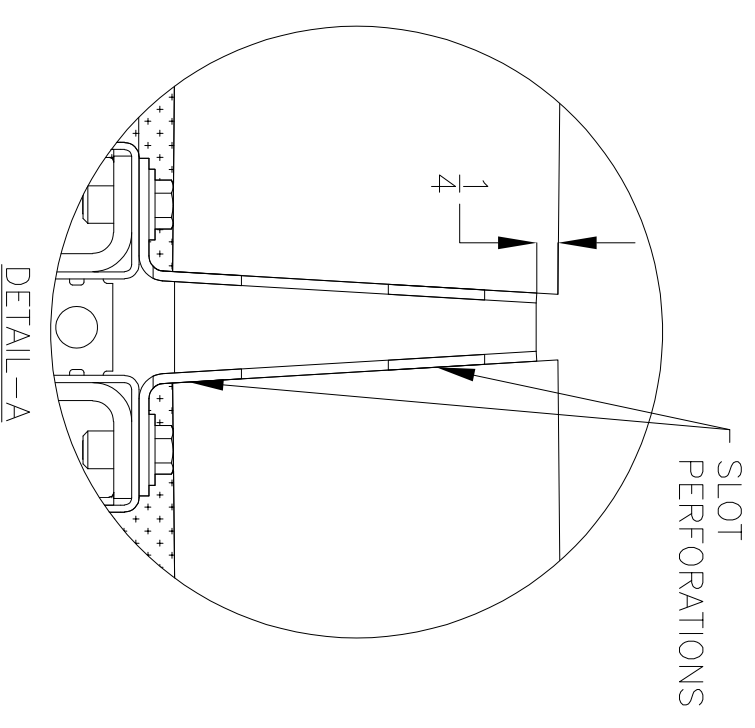
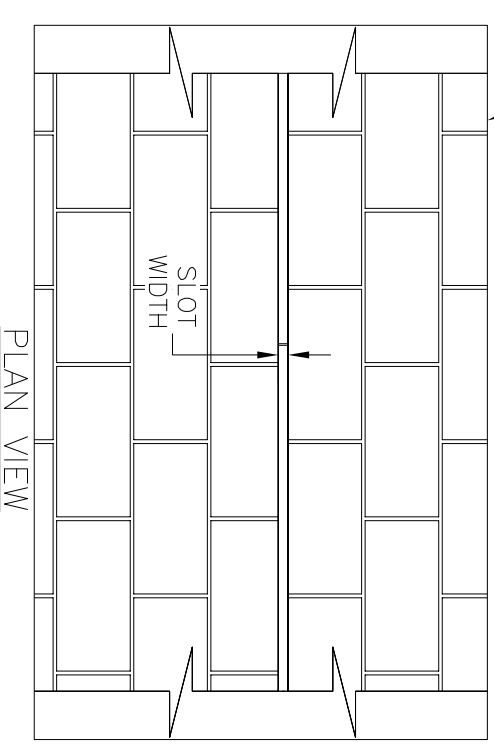
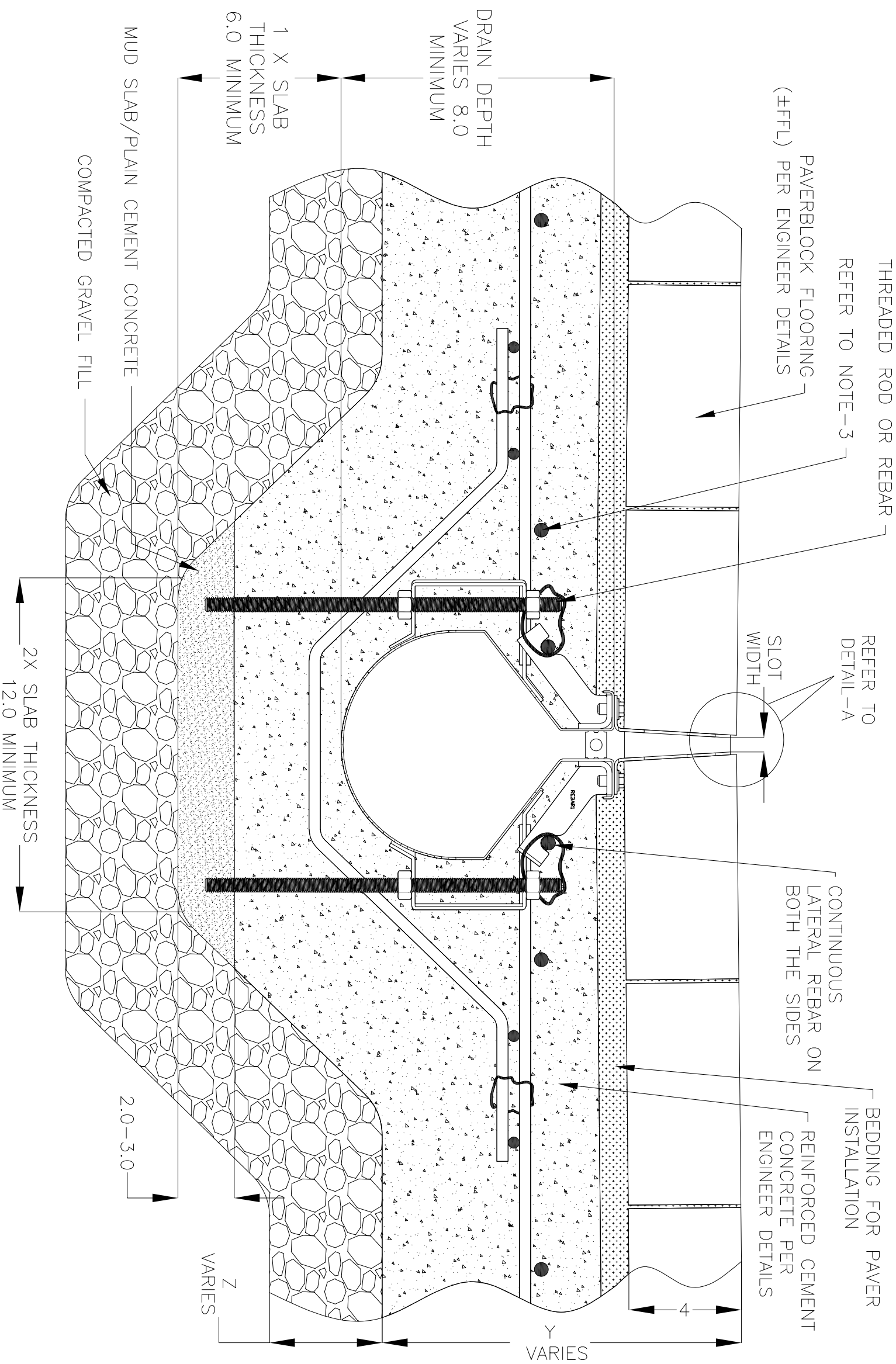


NOTES: UNLESS OTHERWISE SPECIFIED

1. ALL DIMENSIONS ARE IN INCHES.
2. DRAIN BODY MATERIAL: 14GA STAINLESS STEEL T304/T316
3. SPECIFYING ENGINEER IS RESPONSIBLE FOR CONCRETE ENGAGEMENT AND REINFORCING BASED UPON APPLICATION AND LOCAL CODES.
4. REFER TO <https://info.slotdrainsystems.com/installresources> FOR INSTALLATION INSTRUCTIONS.

PAVER BLOCK FLOOR (±FFL) PER ENGINEER DETAILS



11000 SERIES SLOT DRAIN INSTALLATION DETAILS

REVISIONS			
REV	DESCRIPTION	DATE	BY
0	INITIAL RELEASE - RO	5/2/2022	DK



DRAWING TITLE
PAVER BLOCK FLOOR-NEW CONSTRUCTION INSTALL

DWG NO.	SIZE	SCALE	SHEET	REV.
IN-SD11000-001-RO	B	NTS	1 OF 1	0

DRAIN SERIES: 11000 SERIES SLOT DRAIN WITH 4" TPE

ALL DRAWINGS ARE THE EXCLUSIVE PROPERTY OF SLOT DRAIN SYSTEMS. ANY REPRODUCTION IN PART OR IN WHOLE IS PROHIBITED WITHOUT PROPER CONSENT.