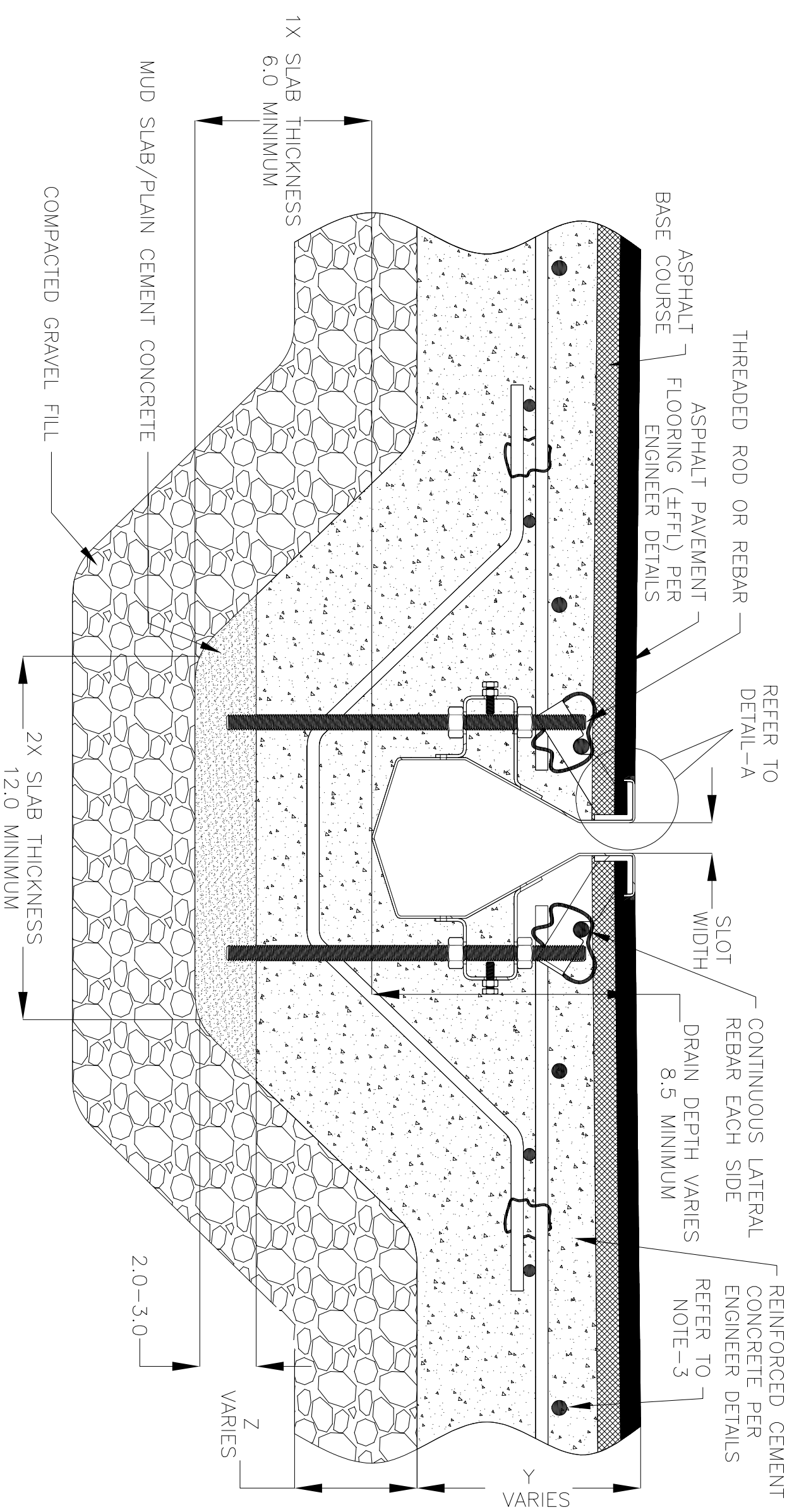
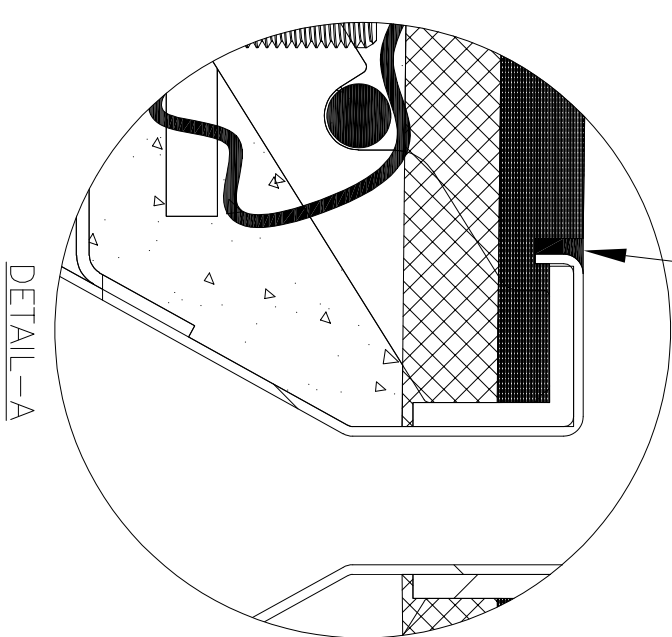
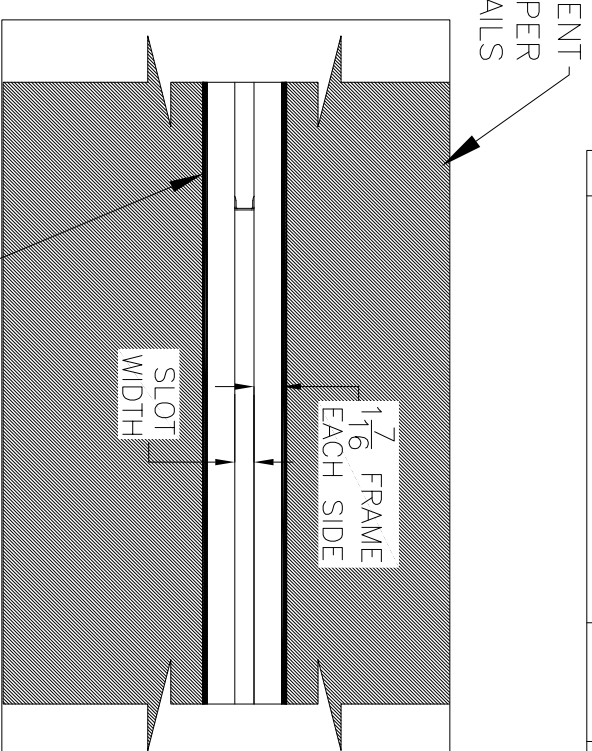


NOTES: UNLESS OTHERWISE SPECIFIED

1. ALL DIMENSIONS ARE IN INCHES.
2. DRAIN BODY MATERIAL: 14GA GALVANIZED/STAINLESS STEEL T304/T316
3. THE DRAINS AND CATCH BASINS ARE INSTALLED WITH THE GASKETS SUPPLIED BY GLOBAL DRAIN TECHNOLOGIES.
4. SPECIFYING ENGINEER IS RESPONSIBLE FOR CONCRETE ENCASUREMENT AND REINFORCING BASED UPON APPLICATION AND LOCAL CODES.
5. REFER TO <https://info.slotdrainsystems.com/installresources> FOR INSTALLATION INSTRUCTIONS.



8000 SERIES SLOT DRAIN INSTALLATION DETAILS



ASPHALT PAVEMENT FLOORING (±FFL) PER ENGINEER DETAILS

REINFORCED CEMENT CONCRETE PER ENGINEER DETAILS

CONTINUOUS LATERAL REBAR EACH SIDE DRAIN DEPTH VARIES 8.5 MINIMUM

SLOT WIDTH

REFER TO DETAIL-A

ASPHALT PAVEMENT FLOORING (±FFL) PER ENGINEER DETAILS
 ASPHALT BASE COURSE

1X SLAB THICKNESS 6.0 MINIMUM

2X SLAB THICKNESS 12.0 MINIMUM

2.0-3.0

VARIES

VARIES



DRAWING TITLE
 ASPHALT FLOOR-NEW CONSTRUCTION INSTALLATION

REV.	DESCRIPTION	DATE	BY
0	INITIAL RELEASE - RO	1/8/2024	DK
1	UPDATED WITH GLOBAL DRAIN TEMPLATE	3/19/2024	DK

REV.	DESCRIPTION	DATE	BY
1	8000 SERIES SLOT DRAIN		

DWG NO.	SIZE	SCALE	SHEET
IN-SD8000-002-R1	B	NTS	1 OF 1

ALL DRAWINGS ARE THE EXCLUSIVE PROPERTY OF SLOT DRAIN SYSTEMS. ANY REPRODUCTION IN PART OR IN WHOLE IS PROHIBITED WITHOUT PROPER CONSENT.