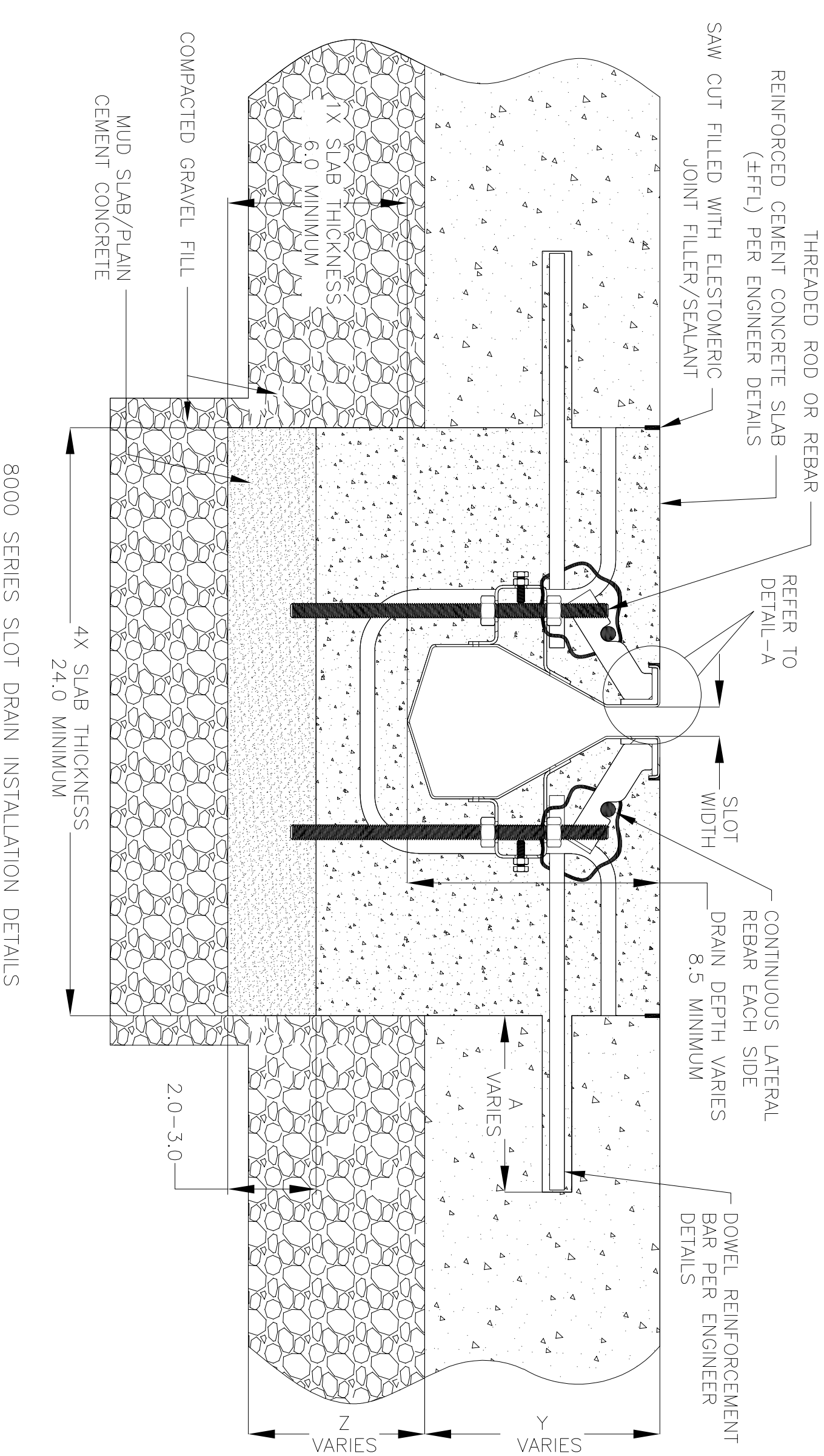
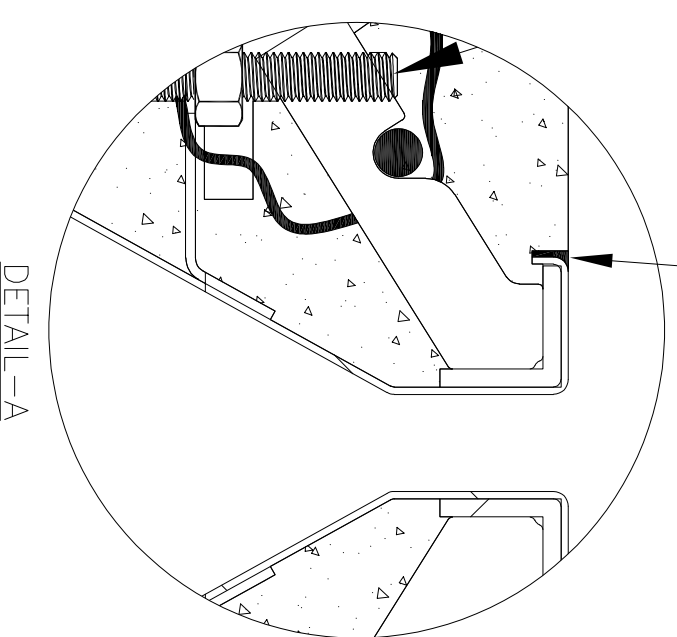
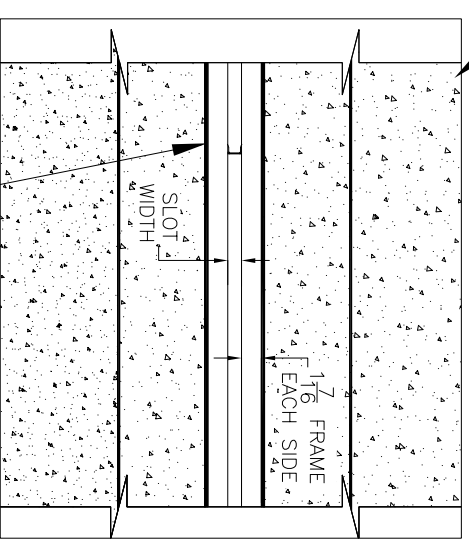


NOTES: UNLESS OTHERWISE SPECIFIED

1. ALL DIMENSIONS ARE IN INCHES.
2. DRAIN BODY MATERIAL: 14GA GALVANIZED/STAINLESS STEEL T304/T316
3. THE DRAINS AND CATCH BASINS ARE INSTALLED WITH THE GASKETS SUPPLIED BY GLOBAL DRAIN TECHNOLOGIES.
4. SPECIFYING ENGINEER IS RESPONSIBLE FOR CONCRETE ENCASUREMENT AND REINFORCING BASED UPON APPLICATION AND LOCAL CODES.
5. REFER TO <https://info.slotdrainsystems.com/installresources> FOR INSTALLATION INSTRUCTIONS.



REINFORCED CEMENT CONCRETE SLAB (FFFL) PER ENGINEER DETAILS



8000 SERIES SLOT DRAIN INSTALLATION DETAILS

REVISIONS

REV	DESCRIPTION	DATE	BY
0	INITIAL RELEASE - RO	1/11/2024	DK
1	UPDATED WITH GLOBAL DRAIN TEMPLATE	3/19/2024	DK



DRAWING TITLE
CONCRETE FLOOR-RETROFIT INSTALLATION

DRAIN SERIES	8000 SERIES SLOT DRAIN	REV.	1
--------------	------------------------	------	---

ALL DRAWINGS ARE THE EXCLUSIVE PROPERTY OF SLOT DRAIN SYSTEMS. ANY REPRODUCTION IN PART OR IN WHOLE IS PROHIBITED WITHOUT PROPER CONSENT.

DWG NO.	SIZE	SCALE	SHEET
IN-SD8000-101-R1	B	NTS	1 OF 1