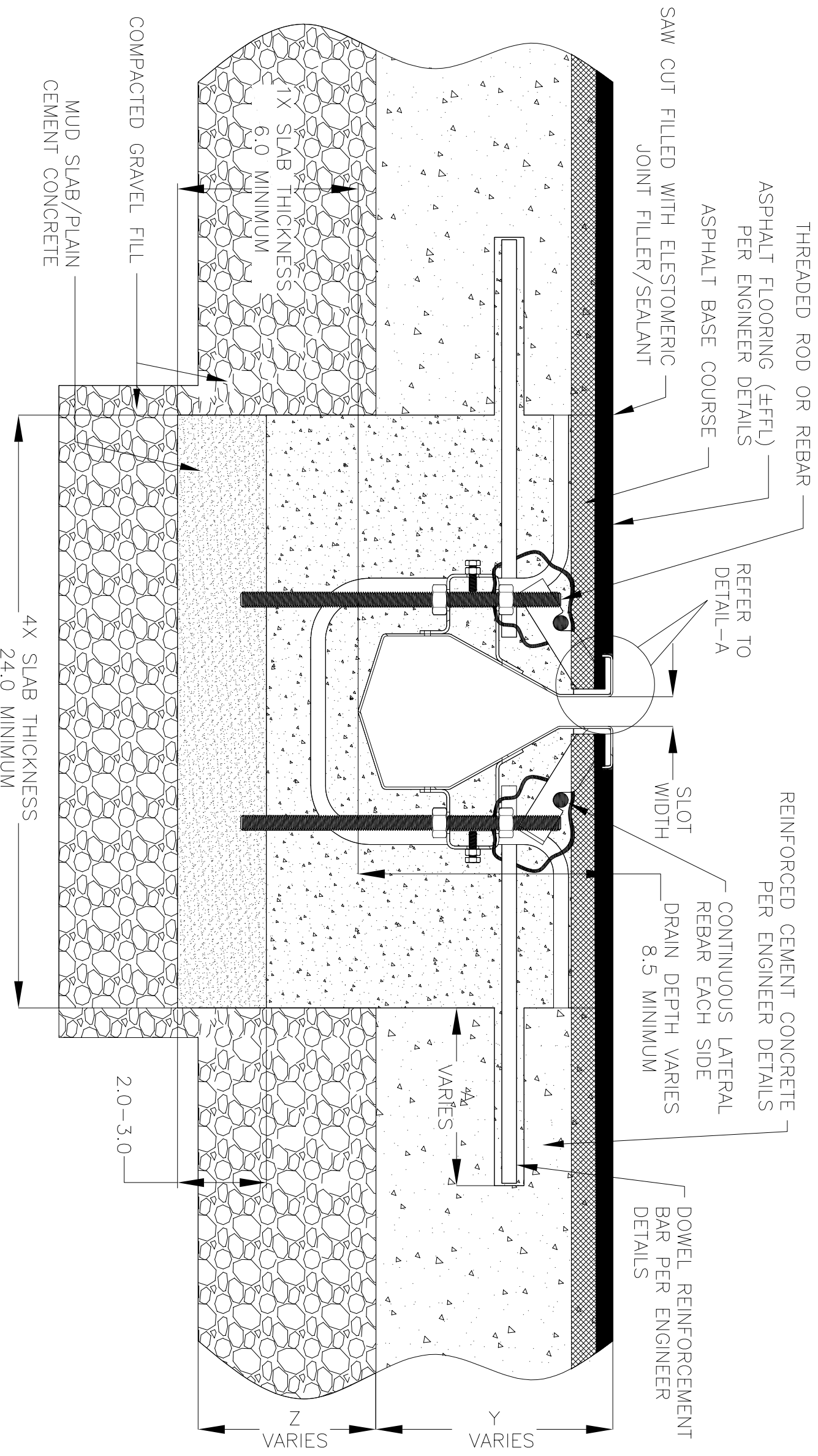


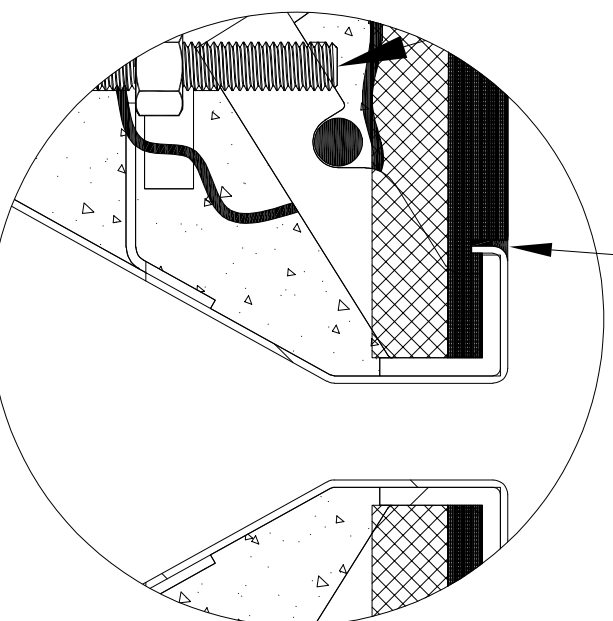
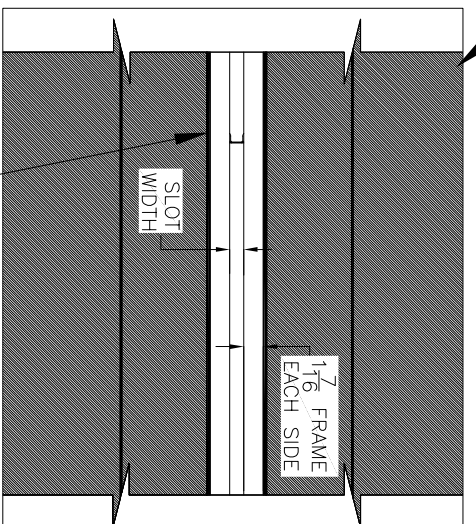
NOTES: UNLESS OTHERWISE SPECIFIED

1. ALL DIMENSIONS ARE IN INCHES.
2. DRAIN BODY MATERIAL: 14GA GALVANIZED/STAINLESS STEEL T304/T316
3. THE DRAINS AND CATCH BASINS ARE INSTALLED WITH THE GASKETS SUPPLIED BY GLOBAL DRAIN TECHNOLOGIES.
4. SPECIFYING ENGINEER IS RESPONSIBLE FOR CONCRETE ENCASUREMENT AND REINFORCING BASED UPON APPLICATION AND LOCAL CODES.
5. REFER TO <https://info.slottedrainsystems.com/installresources> FOR INSTALLATION INSTRUCTIONS.



8000 SERIES SLOT DRAIN INSTALLATION DETAILS

ASPHALT FLOORING (±FFL)
PER ENGINEER DETAILS



REVISIONS		DATE	BY
REV	DESCRIPTION		
0	INITIAL RELEASE - RO	1/11/2024	DK
1	UPDATED WITH GLOBAL DRAIN TEMPLATE	3/19/2024	DK



DRAWING TITLE
ASPHALT FLOOR-RETROFIT INSTALLATION

DRAIN SERIES
8000 SERIES SLOT DRAIN

DWG NO.
IN-SD8000-102-R1

SIZE
B

SCALE
NTS

SHEET
1 OF 1

ALL DRAWINGS ARE THE EXCLUSIVE PROPERTY OF SLOT DRAIN SYSTEMS. ANY REPRODUCTION, IN PART OR IN WHOLE IS PROHIBITED WITHOUT PROPER CONSENT.