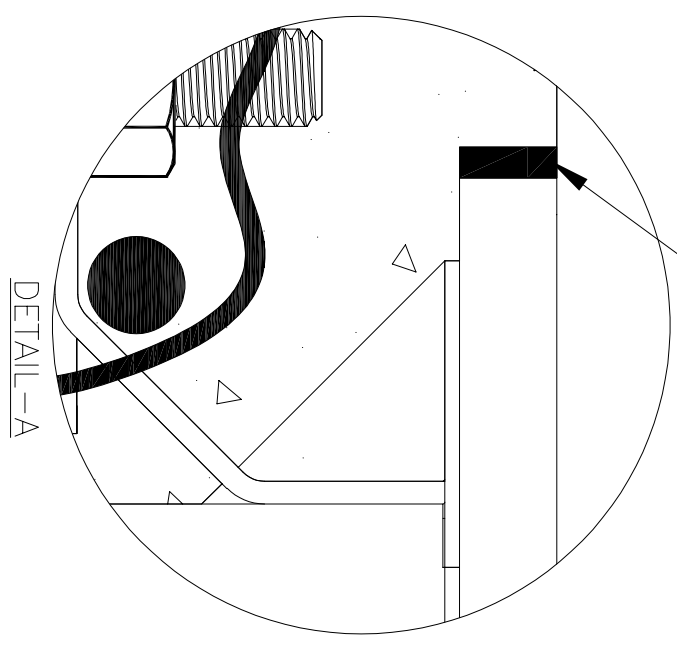
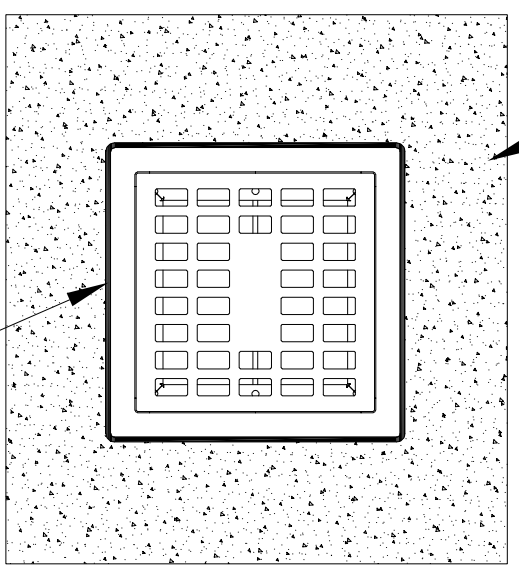
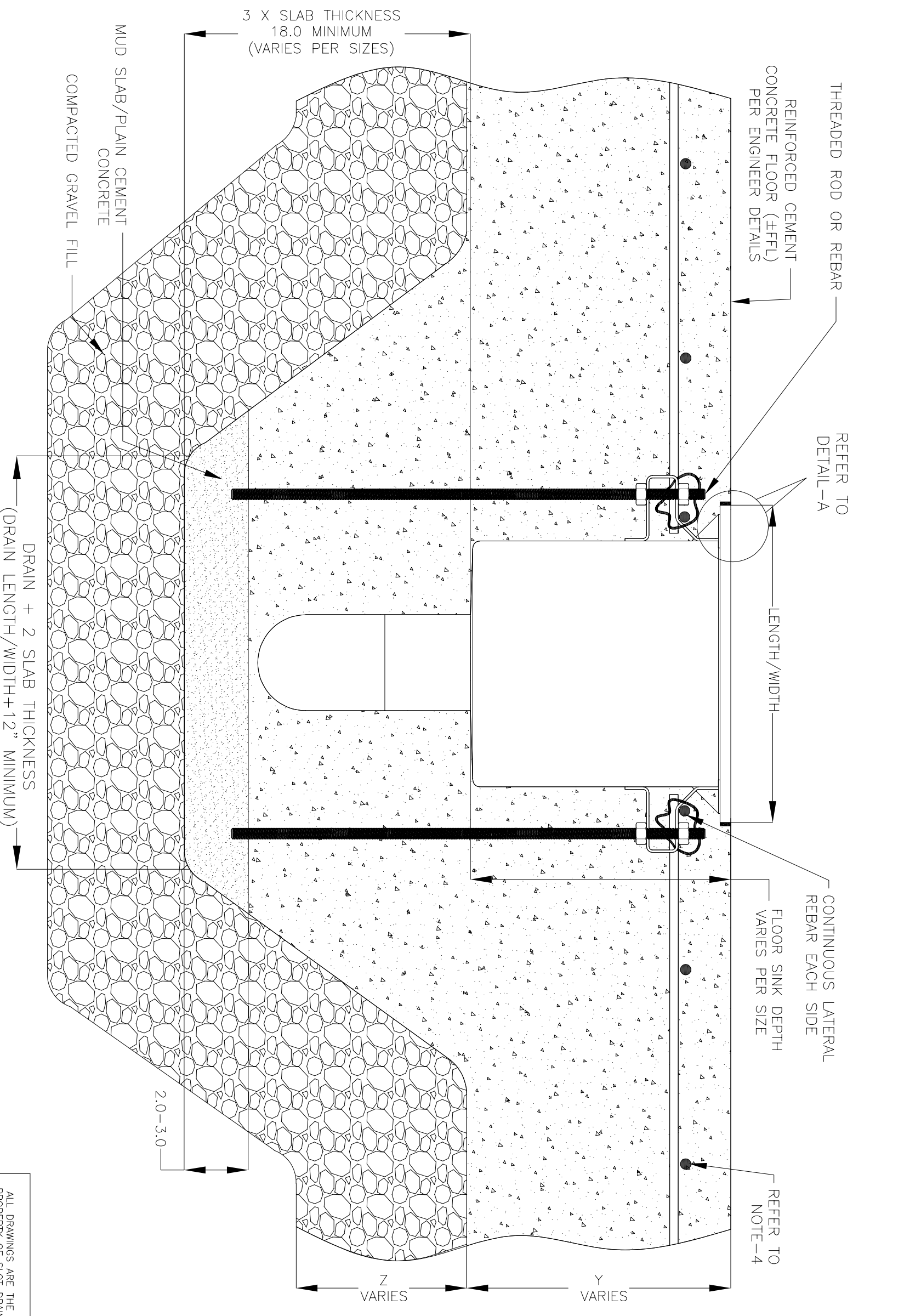


NOTES: UNLESS OTHERWISE SPECIFIED

1. ALL DIMENSIONS ARE IN INCHES.
2. FLOOR SINK BODY MATERIAL: 14GA STAINLESS STEEL T304/T316.
3. THIS INSTALLATION IS IDENTICAL FOR ALL SIZED OF FLOOR SINKS.
4. SPECIFYING ENGINEER IS RESPONSIBLE FOR CONCRETE ENCASMENT AND REINFORCING BASED UPON APPLICATION AND LOCAL CODES.
5. REFER TO <https://info.slotdrainsystems.com/installresources> FOR INSTALLATION INSTRUCTIONS.

REINFORCED CEMENT CONCRETE FLOORING
(±FFL) PER ENGINEER DETAILS



FOOD SAFE FLOOR SINK INSTALLATION DETAILS



DRAWING TITLE
CONCRETE FLOOR-NEW CONSTRUCTION INSTALLATION

DRAIN SERIES
FOOD SAFE FLOOR SINK DRAIN LAYOUT

DWG NO. IN-SDADS-002-R0

REVISIONS		DATE	BY
REV	DESCRIPTION		
0	INITIAL RELEASE - R0	5/9/2024	DK

ALL DRAWINGS ARE THE EXCLUSIVE PROPERTY OF SLOT DRAIN SYSTEMS. ANY REPRODUCTION IN PART OR IN WHOLE IS PROHIBITED WITHOUT PROPER CONSENT.

SIZE B
SCALE NTS
SHEET 1 OF 1