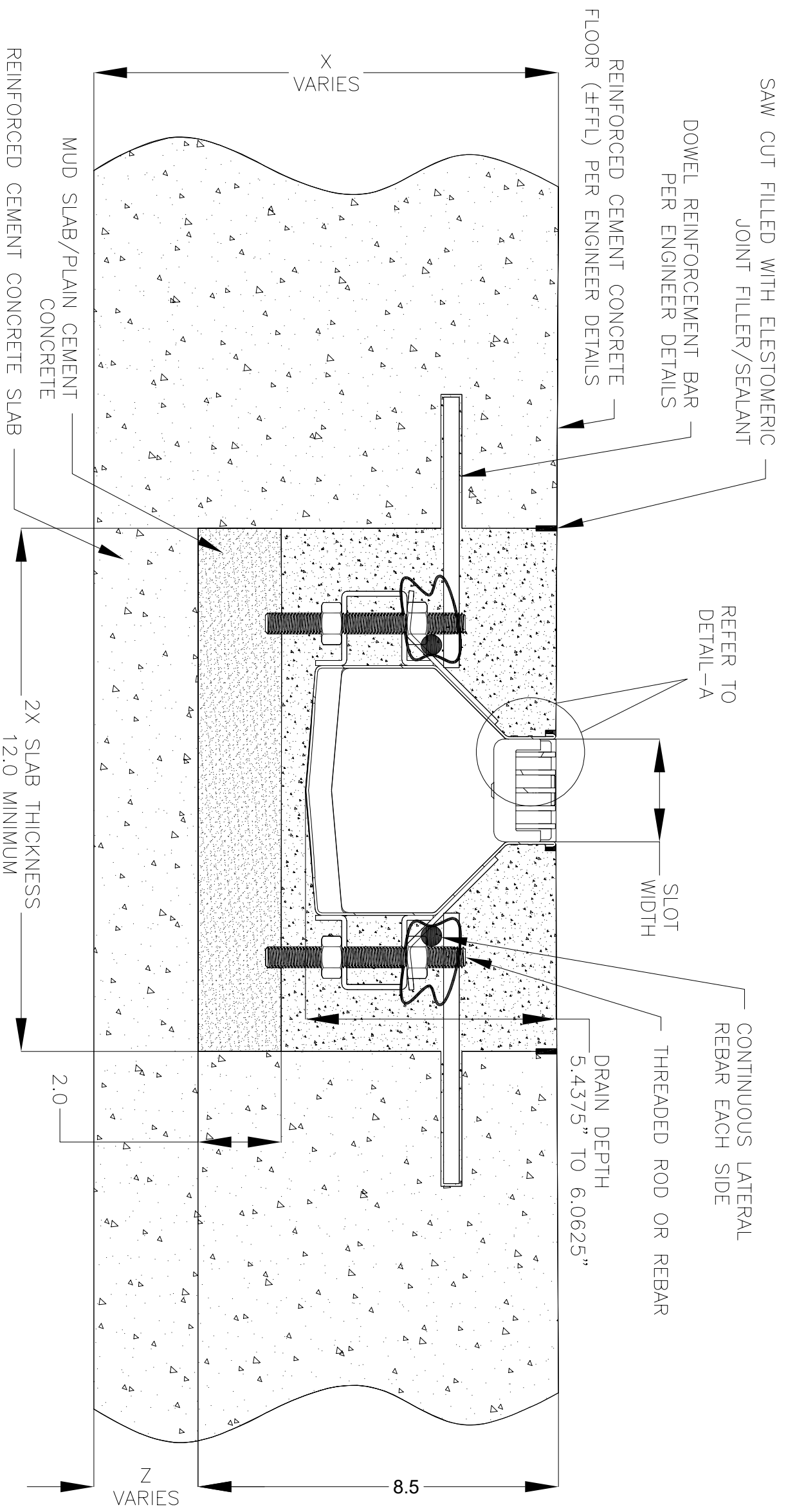
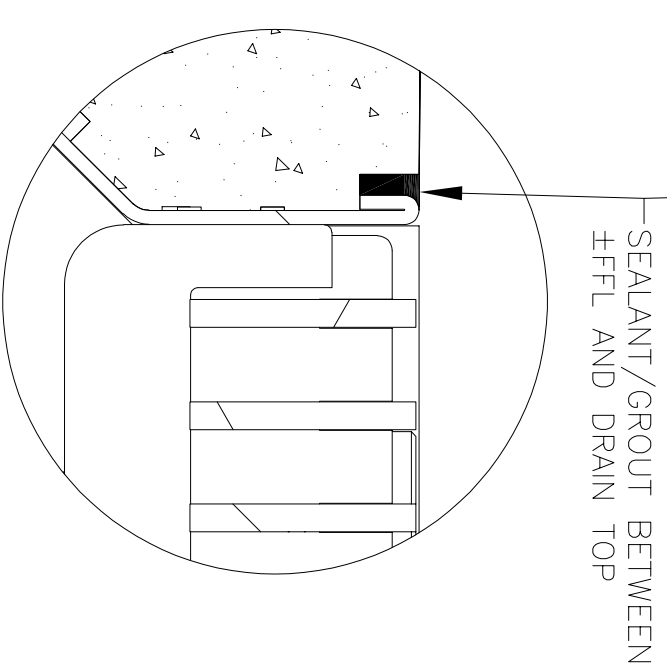
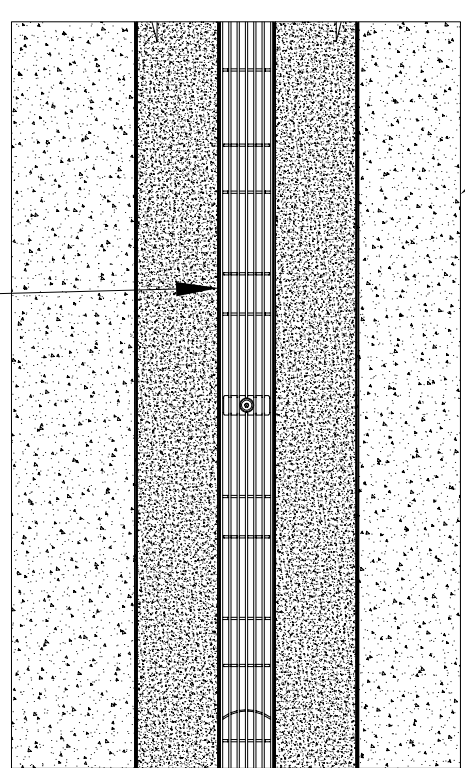


NOTES: UNLESS OTHERWISE SPECIFIED

1. ALL DIMENSIONS ARE IN INCHES.
2. DRAIN BODY MATERIAL: 16GA STAINLESS STEEL T316
3. SPECIFYING ENGINEER IS RESPONSIBLE FOR CONCRETE ENCASEMENT AND REINFORCING BASED UPON APPLICATION AND LOCAL CODES.
4. REFER TO <https://info.slotdrainsystems.com/installresources> FOR INSTALLATION INSTRUCTIONS.



REINFORCED CEMENT CONCRETE FLOORING (±FFL) PER ENGINEER DETAILS



2000 SERIES ELEVATOR MULTI SLOT DRAIN INSTALLATION DETAILS

REVISIONS			
REV	DESCRIPTION	DATE	BY
0	INITIAL RELEASE - RO	8/8/2024	DK



DRAWING TITLE
CONCRETE FLOOR-RETROFIT INSTALLATION

ALL DRAWINGS ARE THE EXCLUSIVE PROPERTY OF SLOT DRAIN SYSTEMS. ANY REPRODUCTION IN PART OR IN WHOLE IS PROHIBITED WITHOUT PROPER CONSENT.			
DWG NO.	SIZE	SCALE	SHEET
IN-SD26091-100-RO	B	NTS	1 OF 1
DRAIN SERIES	CONCRETE FLOOR-RETROFIT INSTALLATION		REV.
2000 SERIES ELEVATOR MULTI SLOT DRAIN			0