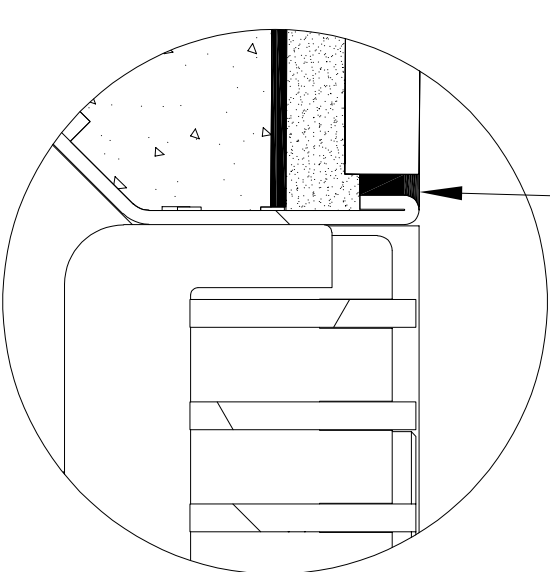
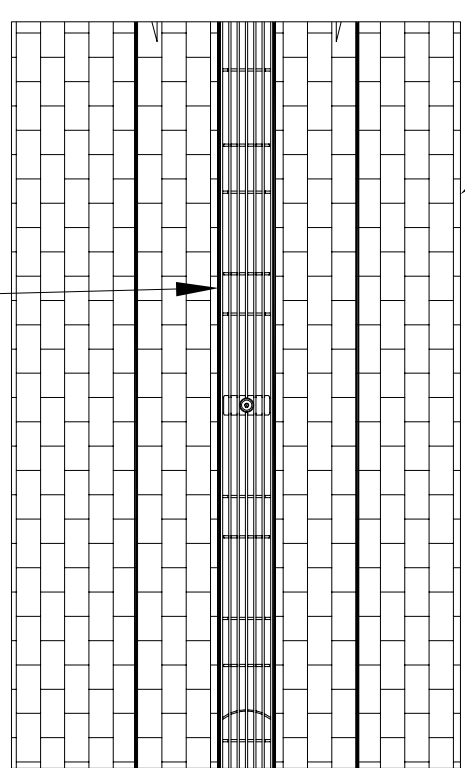
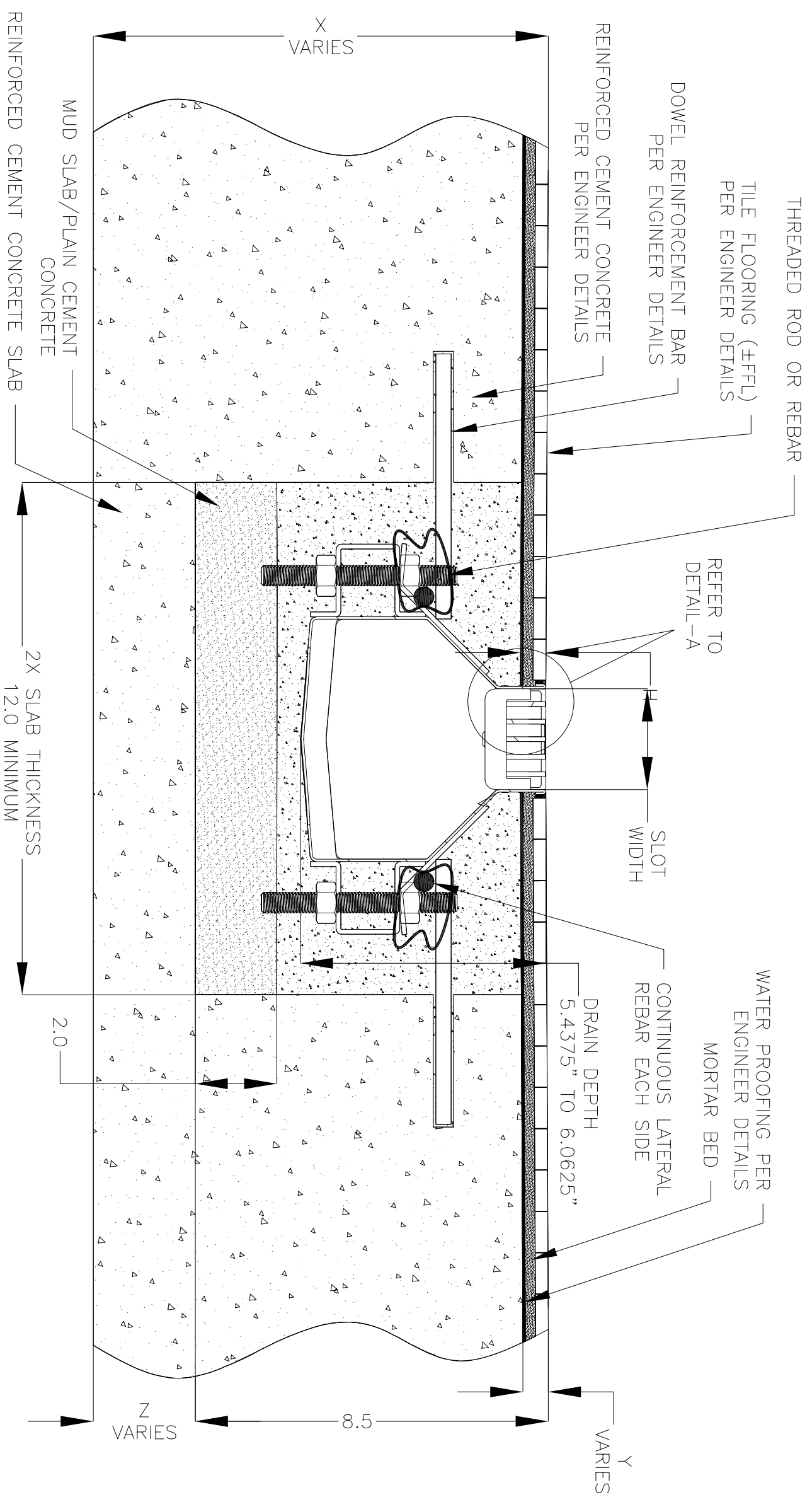


NOTES: UNLESS OTHERWISE SPECIFIED

1. ALL DIMENSIONS ARE IN INCHES.
2. DRAIN BODY MATERIAL: 16GA STAINLESS STEEL T316
3. SPECIFYING ENGINEER IS RESPONSIBLE FOR CONCRETE ENCASUREMENT AND REINFORCING BASED UPON APPLICATION AND LOCAL CODES.
4. REFER TO <https://info.slotdrainsystems.com/installresources> FOR INSTALLATION INSTRUCTIONS.



2000 SERIES ELEVATOR MULTI SLOT DRAIN INSTALLATION DETAILS

REVISIONS			DATE	BY
REV	DESCRIPTION	DATE		
0	INITIAL RELEASE - R0	8/8/2024		DK



ALL DRAWINGS ARE THE EXCLUSIVE PROPERTY OF SLOT DRAIN SYSTEMS. ANY REPRODUCTION IN PART OR IN WHOLE IS PROHIBITED WITHOUT PROPER CONSENT.				
DWG NO.	SIZE	SCALE	SHEET	REV.
IN-SD26091-101-R0	B	NTS	1 OF 1	0
DRAIN SERIES: 2000 SERIES ELEVATOR MULTI SLOT DRAIN				
DRAWING TITLE: TILE FLOOR-RETROFIT INSTALLATION				