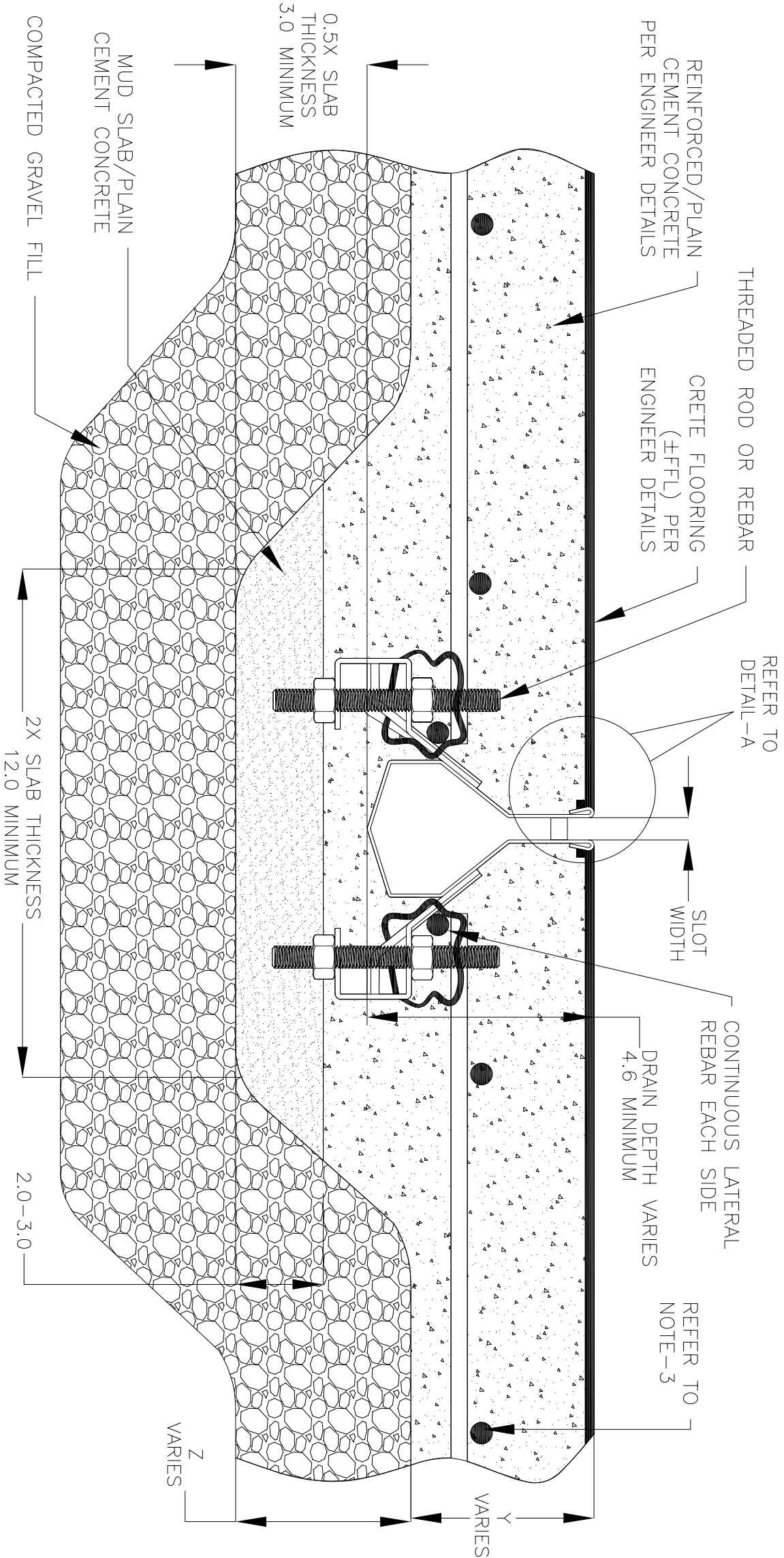
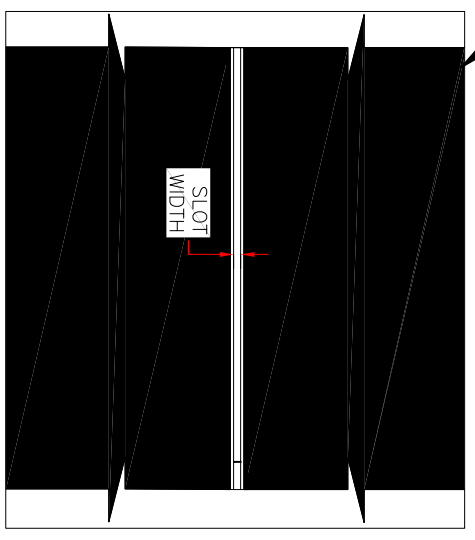


NOTES: UNLESS OTHERWISE SPECIFIED

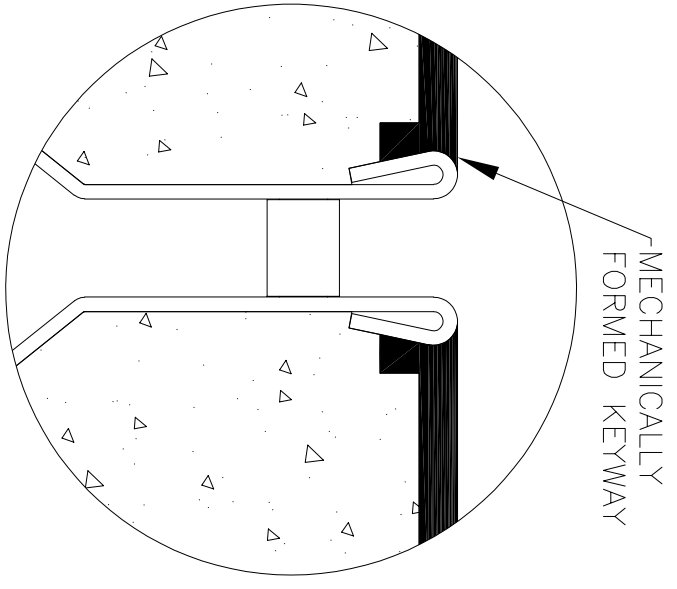
1. ALL DIMENSIONS ARE IN INCHES.
2. DRAIN BODY MATERIAL: 1 4GA STAINLESS STEEL T304/T316
3. SPECIFYING ENGINEER IS RESPONSIBLE FOR CONCRETE ENCASUREMENT AND REINFORCING BASED UPON APPLICATION AND LOCAL CODES.
4. REFER TO <https://info.slotdrainsystems.com/installresources> FOR INSTALLATION INSTRUCTIONS.



7000N SERIES SLOT DRAIN INSTALLATION DETAILS



PLAN VIEW



DETAIL-A

CRETE FLOORING (±FFL) PER ENGINEER DETAILS

REVISIONS		DATE	BY
REV	DESCRIPTION	DATE	BY
0	INITIAL RELEASE - RO	4/26/2019	DK
1	UPDATED THE DRAIN LAYOUT	12/2/2020	DK
2	UPDATED THE DRAIN & REBAR DETAILS	7/14/2021	DK

**SLOT DRAIN SYSTEMS**  
 855.497.7508  
 info@slotdrainsystems.com  
 www.slotdrainsystems.com

DRAWING TITLE  
 CRETE FLOOR-NEW CONSTRUCTION INSTALLATION

DRAIN SERIES  
 7000N SERIES SLOT DRAIN

DWG NO.  
 IN-SD7000N-001-R2

SIZE  
 B

SCALE  
 NTS

SHEET  
 1 OF 1

REV.  
 2

ALL DRAWINGS ARE THE EXCLUSIVE PROPERTY OF SLOT DRAIN SYSTEMS. ANY REPRODUCTION IN PART OR IN WHOLE IS PROHIBITED WITHOUT PROPER CONSENT.