



### SPECIFICATIONS

#### GENERAL:

The surface drainage system shall Landscape Trench Drain - Flat, to be used with trench grates as manufactured by Landscape Drains.

#### MATERIALS:

T304 Stainless Steel / T316 Stainless Steel

#### GRATES:

Load Class A, B (Optional)

#### DESIGN OPTIONS:

Material (\$): SS304(5), SS316(6)  
 End (\*): Open (O), End Cap (1)  
 Grate Width (#): 5"  
 Grate Height (^): 0.25 (A), 0.5 (B), 0.75 (C), 1 (D)  
 Section Lengths: Full 7'6" Standard  
 Custom Lengths available  
 Typical runs start with 102  
 Outlet Diameter: (ND) 2", 3"

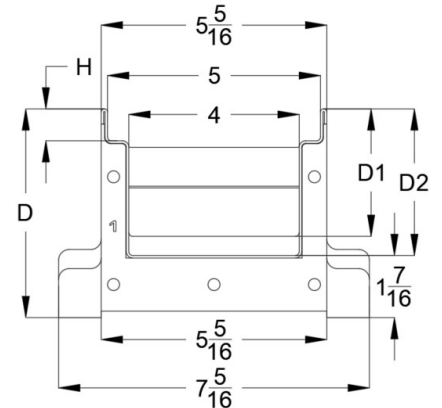
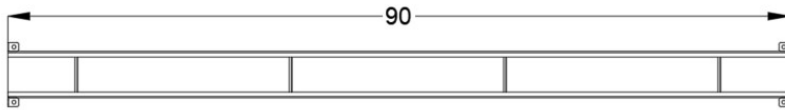
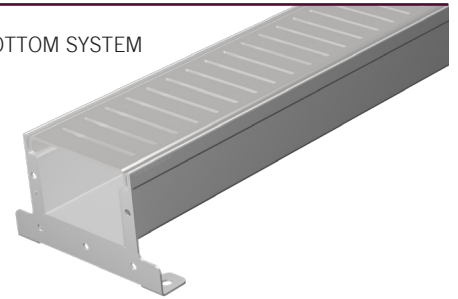
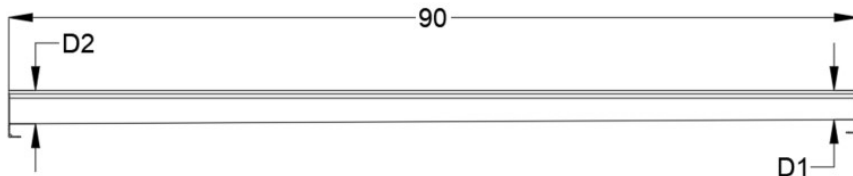
#### SLOPE:

0.5% Standard, 1% Optional

#### INSTALLATION:

The Landscape Trench Drain - Flat Bottom shall be installed in accordance with the manufacturer's installation instructions and recommendations. Trench sections are manufactured with leveling bars and flanges to secure the drain within the concrete slab.

TYPICAL MODULAR LAYOUT OF A LANDSCAPE TRENCH DRAIN - FLAT BOTTOM SYSTEM



### DRAIN CHANNELS NOTE: Also available with 90° sections, 'T' sections, for all of the depths specified below.

DESCRIPTION	PART NO.	INVERT SHALLOW INCHES	INVERT DEEP INCHES
LD TRENCH - FLAT 102	LTF\$^*^#-102	3	3 7/16
LD TRENCH - FLAT 203	LTF\$^*^#-203	3 7/16	3 7/8
LD TRENCH - FLAT 304	LTF\$^*^#-304	3 7/8	4 5/16
LD TRENCH - FLAT 405	LTF\$^*^#-405	4 5/16	4 13/16
LD TRENCH - FLAT 506	LTF\$^*^#-506	4 13/16	5 1/4
LD TRENCH - FLAT 607	LTF\$^*^#-607	5 1/4	5 11/16
LD TRENCH - FLAT 708	LTF\$^*^#-708	5 11/16	6 3/16
LD TRENCH - FLAT 809	LTF\$^*^#-809	6 3/16	6 5/8
LD TRENCH - FLAT 9010	LTF\$^*^#-9010	6 5/8	7 1/16

TRENCH DRAIN CATCH BASINS ARE OPTIONAL IN ANY CUSTOM DIMENSIONS

GRAING: FORMED SLOT GRAING IS OUR STANDARD OPTION TO CUSTOMIZE AS REQUIRED

SPECIFYING ENGINEER IS RESPONSIBLE FOR CONCRETE ENCASEMENT AND REINFORCING BASED UPON APPLICATION AND LOCAL CODES.  
 FOOD SAFE DRAINS RESERVES THE RIGHT TO CHANGE THE PRODUCT AND SPECIFICATIONS WITHOUT NOTICE