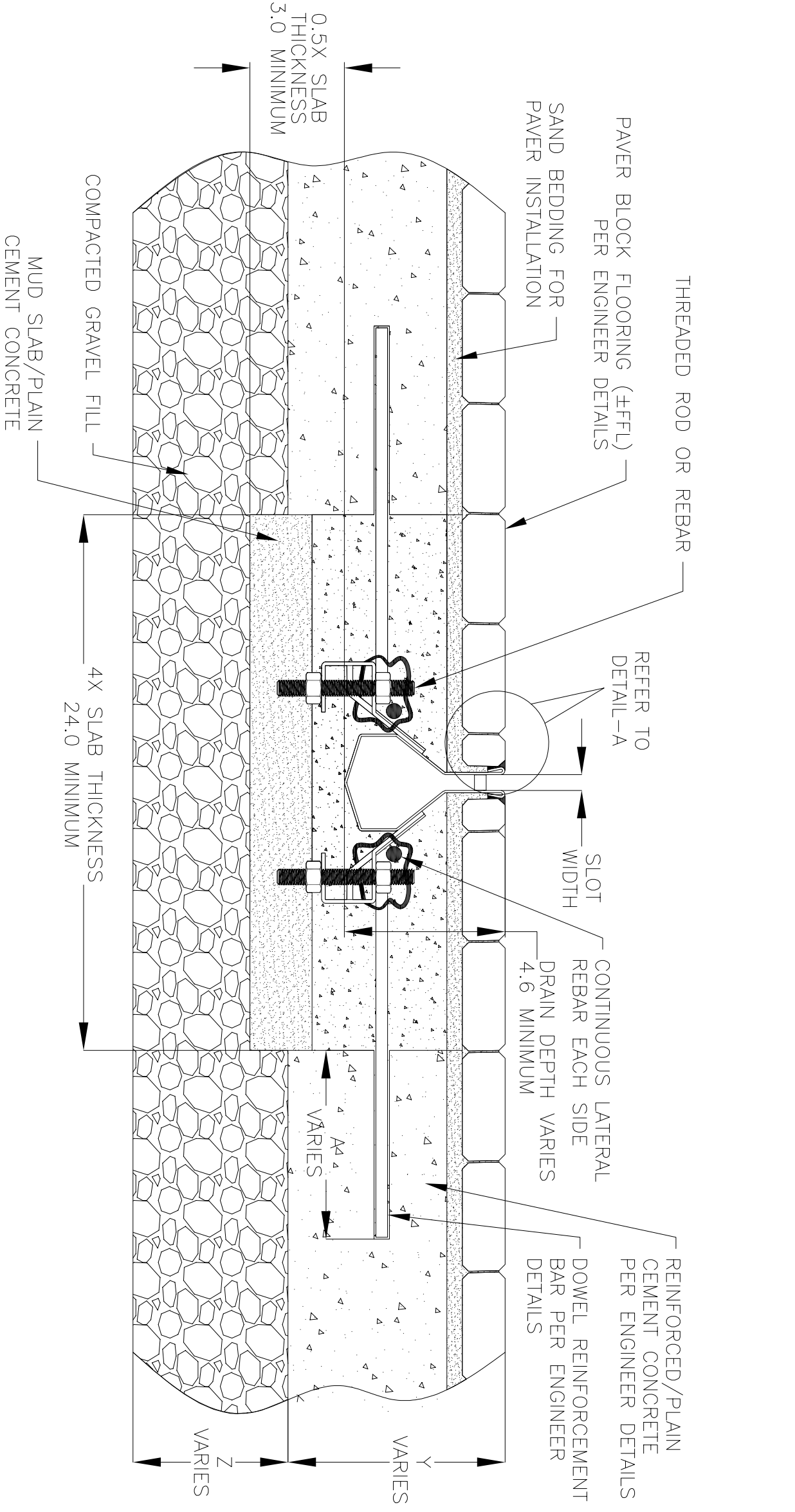


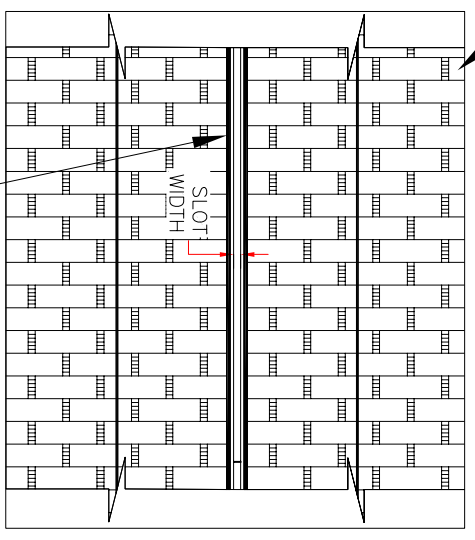
NOTES: UNLESS OTHERWISE SPECIFIED

1. ALL DIMENSIONS ARE IN INCHES.
2. DRAIN BODY MATERIAL: 1 4GA STAINLESS STEEL T304/T316
3. SPECIFYING ENGINEER IS RESPONSIBLE FOR CONCRETE ENCASUREMENT AND REINFORCING BASED UPON APPLICATION AND LOCAL CODES.
4. REFER TO <https://info.slotdrainsystems.com/installresources> FOR INSTALLATION INSTRUCTIONS.

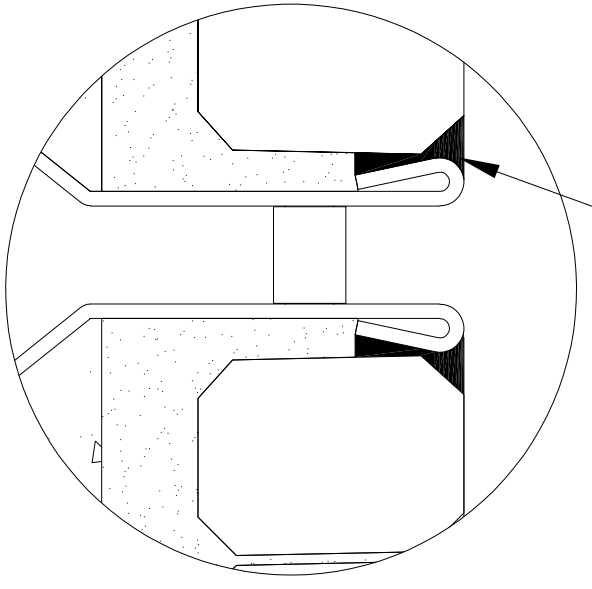


7000N SERIES SLOT DRAIN INSTALLATION DETAILS

PAVER BLOCK FLOORING (FFFL) PER ENGINEER DETAILS



SEALANT BETWEEN FFFL AND DRAIN TOP



DETAIL-A

REVISIONS		DATE	BY
REV	DESCRIPTION	11/19/2019	DK
0	INITIAL RELEASE - R0		
1	UPDATED THE DRAIN LAYOUT	12/2/2020	DK
2	UPDATED THE DRAIN & REBAR DETAILS	7/14/2021	DK

ALL DRAWINGS ARE THE EXCLUSIVE PROPERTY OF SLOT DRAIN SYSTEMS. ANY REPRODUCTION IN PART OR IN WHOLE IS PROHIBITED WITHOUT PROPER CONSENT.

SLOT DRAIN SYSTEMS
 855.497.7508
 info@slotdrainsystems.com
 www.slotdrainsystems.com

DRAWING TITLE		PAVER BLOCK FLOORING-RETROFIT INSTALLATION	
DRAIN SERIES		7000N SERIES SLOT DRAIN	
DWG NO.	SIZE	SCALE	SHEET
IN-SD7000N-100-R2	B	NTS	1 OF 1
REV.			2